



Ajeenkya DY Patil Journal of Innovation in Engineering & Technology

Journal Homepage: <https://www.adypsoe.in/adypjiet>

An Integrated AI Tutor for Personalized Learning in Remote Education

¹ Prof. Ashwini Patil,

² Muntazim Shaikh

³ Rajat Pethe

⁴ Harsh Pujari

¹ Assistant Professor, Professor, Ajeenkya D Y Patil School of Engineering, Pune, INDIA

²⁻⁵ UG students, Ajeenkya D Y Patil School of Engineering, Pune, INDIA

Article History:

Received: 08-11-2025

Revised: 20-12-2025

Accepted: 29-12-2025

Abstract:

Remote education has become one of the most widely adopted learning methods due to its accessibility and flexibility. However, online learning environments often fail to provide individualized academic support, real-time guidance, and adaptive learning pathways. Many learners struggle with motivation, concept clarity, and lack of personalized feedback, reducing overall learning effectiveness. This paper proposes an Integrated AI Tutor Framework for personalized learning in remote education. The system uses Artificial Intelligence techniques such as Natural Language Processing (NLP), adaptive recommendation strategies, and learning analytics to provide customized lessons based on individual student performance and pace. The tutor continuously monitors learner progress, delivers instant feedback, and generates tailored learning content to improve engagement and academic outcomes. The proposed framework is scalable, interpretable, and suitable for future extensions such as multimodal tutoring and offline learning support.

Keywords: Intelligent Tutoring System, Personalized Learning, Remote Education, Artificial Intelligence, NLP, Adaptive Learning, Learning Analytics

1.0 Introduction

Artificial Intelligence (AI) is playing a transformative role in modern education by enabling adaptive and personalized learning experiences. Traditional classroom learning provides direct teacher interaction, whereas remote education platforms often deliver uniform content to all students, regardless of their learning abilities and pace [1]. Remote learning has expanded significantly, but challenges such as reduced engagement, lack of individualized support, and

delayed feedback remain critical barriers. Students often require personalized explanations and guidance to build conceptual clarity and confidence. Intelligent Tutoring Systems (ITS) provide a promising solution by simulating one-to-one tutoring through AI-driven interaction, customized learning resources, and continuous assessment. The proposed Integrated AI Tutor aims to enhance remote education by offering adaptive lesson delivery, real-time feedback, and progress tracking. The remainder of this paper is structured as follows: Section II discusses related work, Section III explains the proposed methodology, Section IV presents results and discussion, and Section V concludes the paper.

Artificial Intelligence has emerged as one of the most influential technologies in modern education, enabling learning systems to become more interactive, adaptive, and student-centered. With advancements in machine learning and Natural Language Processing, [2] AI-driven tools are now capable of delivering personalized educational support that was previously possible only through human instructors. These developments have created new opportunities to enhance teaching and learning processes, especially in digital environments. In recent years, remote education has expanded rapidly due to technological progress and the increased need for flexible learning options. Online learning platforms have become essential for students worldwide; however, they often fail to provide the individualized guidance available in traditional classrooms. Many learners face difficulties such as reduced engagement, lack of motivation, delayed feedback, and limited instructor interaction, which negatively impacts their academic performance [3]. Personalized learning has therefore become a critical requirement in remote education. Since every student has a unique learning pace, background knowledge, and preferred learning style, uniform content delivery is insufficient. Intelligent Tutoring Systems aim to overcome this limitation by continuously assessing learner progress, identifying weaknesses, and adapting instructional content accordingly [4,5].

2.0 Problem Statement

Lack of Personalized Learning in Remote Education:

Even though remote education platforms provide flexibility and accessibility, most systems deliver the same content to all learners regardless of their individual learning pace, background knowledge, or understanding level. This one-size-fits-all approach reduces learning effectiveness and fails to address the unique needs of each student.

Inadequate Real-Time Feedback and Student Engagement:

Existing online learning systems often lack instant feedback and interactive support. Students face difficulties in resolving doubts quickly, which leads to reduced engagement, lack of motivation, and poor conceptual clarity. The absence of continuous guidance makes it challenging for learners to stay on track.

Need for an Intelligent and Adaptive Learning System:

There is a critical need for a smart, AI-driven tutoring system that can analyze student performance, understand learning behavior, and provide personalized content accordingly. Such a system should offer real-time feedback, adaptive learning paths, and continuous progress monitoring to improve overall learning outcomes.

3.0 Literature Survey

Recent advancements in Artificial Intelligence (AI) have significantly contributed to the development of Intelligent Tutoring Systems (ITS) for personalized learning in remote education. Modern systems such as LPI Tutor proposed by A. Sonkar et al. [1] utilize large language models along with retrieval-augmented generation and prompt engineering to deliver personalized tutoring experiences. Similarly, VTutor developed by Y. Chen et al. [2] focuses on scalable tutoring with real-time monitoring, improving student engagement in online environments. NeuroChat by A. Baradari et al. [3] introduces neuroadaptive techniques to customize learning experiences based on cognitive responses.

A significant comparative study by T. Kestin et al. [4, 5] demonstrates that AI tutoring systems can outperform traditional in-class active learning by providing consistent feedback and personalized attention. Further, a comprehensive review by A. Létourneau [6] highlights the rapid growth of AI-driven ITS and identifies key technologies such as machine learning and natural language processing as core enablers of adaptive learning systems. Hybrid approaches combining multiple machine learning techniques are explored by B. Hanumantha Rao [7], who integrates decision trees and support vector machines to improve tutoring accuracy in STEM education. Additionally, research by Sumana M. and Anagha Kalyani [8] demonstrates the use of natural language query processing for enhanced data analysis, which supports interactive learning systems.

The application of advanced AI models in tutoring is further supported by A. Vanzo et al. [9], where GPT-based systems are shown to improve student engagement and learning outcomes. Similarly, Pooja Pathak and Parul Choudhary [10] provide a comprehensive review of machine learning techniques that form the backbone of intelligent tutoring systems. Multimodal learning approaches are explored by Zhang et al. [11], where video, text, and interaction are combined to create more engaging educational experiences. Furthermore, Beverly Woolf et al. [12] present adaptive educational systems that dynamically adjust content based on learner behavior. Database and backend support for scalable AI systems are discussed by Quan Ha Le and Marcelo Diaz [13], emphasizing the role of reliable data management systems. Additionally, transfer learning techniques explained by Paul Azunre [14] enable AI tutors to leverage pre-trained models for improved performance. Deep learning and NLP-based intelligent systems are further analyzed by Manjunath R. Kounte and Pratyush [15], highlighting their application in intelligent machines. Knowledge tracing techniques introduced by Chris Piech et al. [16] allow AI systems to predict student learning progress and personalize content accordingly.

A multimodal AI tutoring framework for engineering education is proposed by Bekim Fetaji [17], which enhances personalized learning experiences. Earlier studies by Kurt VanLehn [17] emphasize the effectiveness of human tutoring, providing a benchmark for AI systems. The application of AI in tutoring systems has been explored since early works by Du Li et al. [19], which demonstrate the use of AI technologies in educational systems. Foundational work such as AutoTutor developed by Arthur Graesser et al. [20] introduced dialogue-based intelligent tutoring, forming the basis for modern AI tutors.

In conclusion, the reviewed literature shows that AI-driven tutoring systems have evolved from basic rule-based models to advanced, adaptive, and multimodal systems. These technologies enable personalized learning, improve engagement, and enhance academic performance in remote education. However, challenges such as ethical concerns, data privacy, and system scalability remain, requiring further research and development.

4.0 Methodology

The proposed Integrated AI Tutor system is designed to provide personalized learning assistance in remote education. It continuously adapts lesson content according to student performance, generates instant feedback, and supports learner independence. The framework integrates AI models with a user-friendly web interface, making it suitable for prototype-level educational deployment.

4.1 System Architecture

The system architecture consists of the following components:

- **Input Module:** The Input Module is responsible for collecting learner-generated data, including queries, responses, and assessment results from various sources such as quizzes, forms, and interactions. It serves as the primary interface for data acquisition. Additionally, it performs pre-processing and structuring of the collected data to ensure it is suitable for further analysis and interpretation by downstream modules.
- **AI Tutor Module:** The AI Tutor Module leverages Natural Language Processing (NLP) techniques to interpret and understand learner queries expressed in diverse linguistic forms. It functions as an intelligent virtual instructor. It delivers context-aware explanations, step-by-step solutions, and constructive feedback, thereby enhancing conceptual clarity and supporting personalized learning experiences.
- **Recommendation Module:** The Recommendation Module analyzes learner performance data to identify patterns, strengths, and areas requiring improvement. It utilizes this analysis to understand individual learning behaviors and progress. Based on these insights, it generates personalized recommendations, including learning resources, practice exercises, and assessments tailored to the learner's needs.
- **Database Module:** The Database Module serves as the central repository for storing critical system data, including learner profiles, progress records, assessment outcomes, and activity logs. It ensures data integrity, security, and efficient retrieval, enabling seamless interaction with other system components for processing and analysis.
- **Output Module:** Generates analytics dashboards and reports. This modular structure supports scalability and future enhancements. Shows learner performance and insights clearly.

4.2 Working Mechanism

1. Data Harvesting & Student Profiling

The system captures student interaction data (quiz scores, time spent on topics, and engagement levels) through the Learning Management System (LMS). A Profile Management Engine acts as

a digital guardian, regulating the difficulty curve to prevent student burnout and ensuring the learning path remains optimized for the individual.

2. Continuous Progress Monitoring

The AI Core (Large Language Model/Neural Network) acts as the system's "brain," constantly scanning the student's input. It uses natural language processing (NLP) to read real-time comprehension levels and sentiment, maintaining a live pulse of the student's academic health.

3. Adaptive Evaluation & Logic

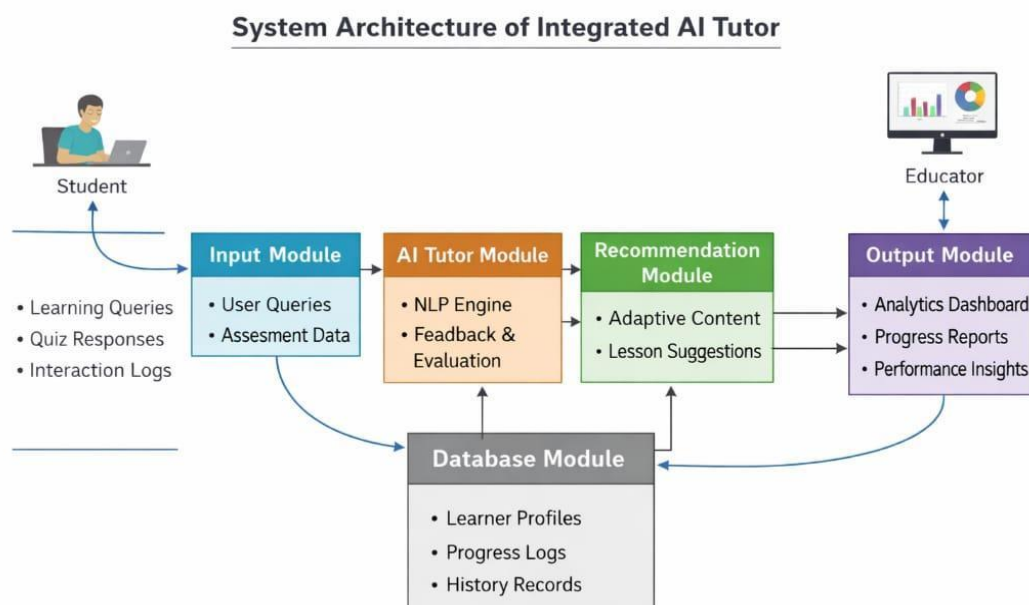
The controller analyzes incoming student performance data against pre-set pedagogical benchmarks. It confirms if there are enough fundamental gaps addressed and if the student is ready for a more advanced module before making any content-delivery decisions.

4. Automated Tutoring & Intervention

If the logic identifies a knowledge gap, the system automatically triggers a personalized intervention (e.g., a targeted video or a simplified explanation). It remains in a "closed-loop" state, meaning it will immediately provide corrective feedback if it detects a conceptual misunderstanding or if the student's engagement drops.

5. Performance Analytics & Remote Visibility

All learning progress and efficiency data are sent to a cloud-based dashboard via the network. This allows educators and parents to monitor the student's status and the AI's effectiveness in real-time, ensuring total transparency in the remote education.



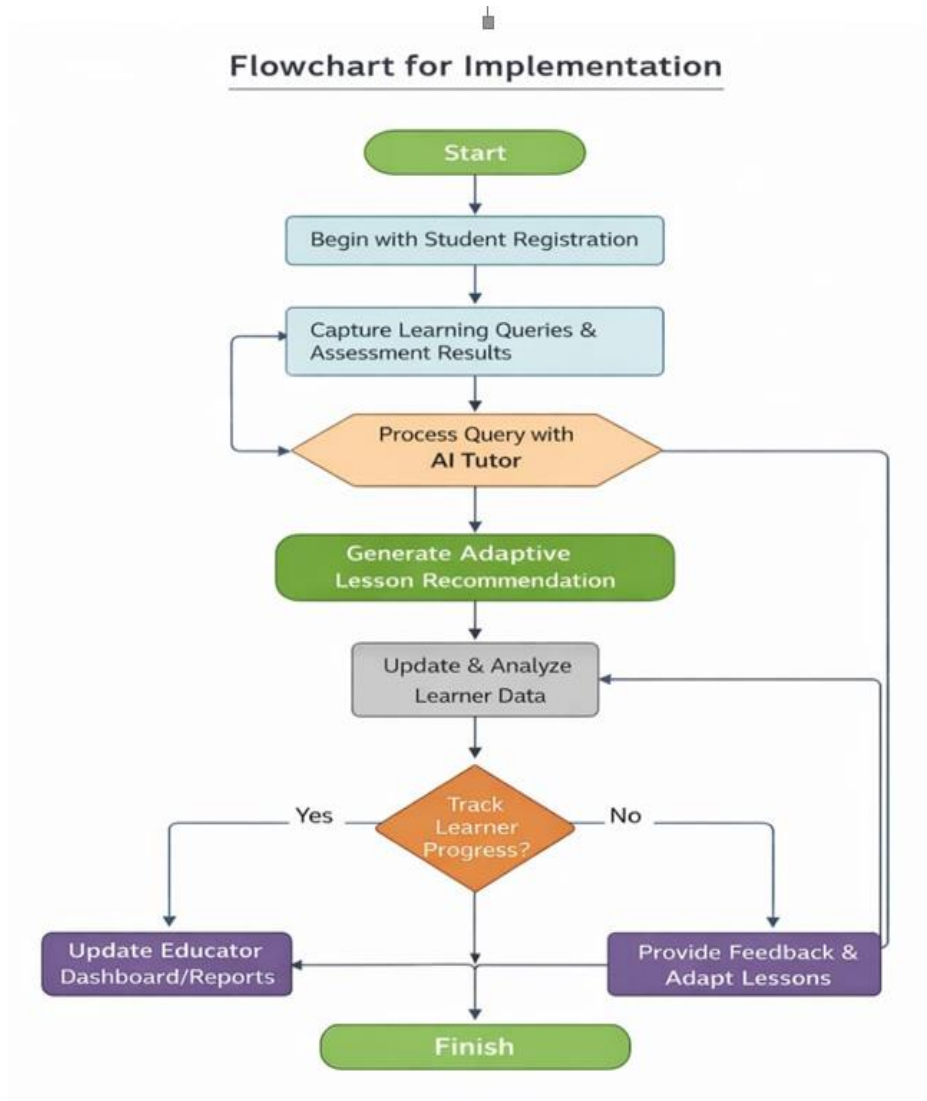


Fig. 2. Implementation Flowchart

6.0 Implementation Details

Software Components:

The proposed system is implemented using:

- Python 3.x for backend development.
- Flask framework for API handling.
- React.js for frontend interface.

- PostgreSQL database for learner records.
- TensorFlow/PyTorch for AI model execution.
- Docker/Kubernetes for scalable deployment.
- Open AI-based integration is included for conversational tutoring support.

7.0 Result & Evaluation

7.1 Improved Learning Outcomes

The integrated AI tutor significantly enhances student performance by delivering content tailored to individual learning styles. It identifies weak areas through continuous assessment and provides targeted practice, helping students grasp concepts more effectively. As a result, students show better understanding, retention, and improved exam scores compared to traditional remote learning methods.

7.2 Enhanced Student Engagement and Motivation

The system incorporates interactive features such as gamified quizzes, real-time feedback, videos, and adaptive challenges. These elements make learning more interesting and less monotonous. By keeping students actively involved, the AI tutor increases motivation, reduces dropout rates, and encourages consistent participation in remote education.

7.3 Highly Personalized Learning Experience

The AI tutor uses data analytics and machine learning algorithms to adapt content based on each student's pace, preferences, and performance. Fast learners can move ahead quickly, while slower learners receive additional support and simplified explanations. This personalized approach ensures that no student is left behind and maximizes individual learning potential.

7.4 Accessibility and Inclusivity in Remote Education

One of the major outcomes is improved access to quality education for students in remote and underserved areas. The AI tutor is available 24/7 and can be accessed through devices like smartphones or computers. It helps bridge the educational gap between urban and rural areas, promoting equal opportunities for all learners regardless of location or background.

7.5 Continuous Monitoring, Evaluation, and Feedback

The system continuously tracks student progress, attendance, performance trends, and learning behavior. It generates detailed reports and insights for both students and teachers. This data-driven evaluation helps in identifying strengths and weaknesses, enabling timely intervention, better decision-making, and overall improvement in the teaching-learning process.

8.0 Limitations and Future Scope

Future Scope

Advanced Personalization with Deep Learning: Future AI tutors can use more advanced algorithms to understand emotions, learning behavior, and attention levels, providing even more accurate and adaptive learning experiences.

Integration with AR/VR Technologies: AI tutors can be combined with Augmented Reality (AR) and Virtual Reality (VR) to create immersive learning environments, making complex subjects more interactive and easier to understand.

Multilingual and Voice-Based Learning: Future systems can support multiple regional languages and voice interaction, making education accessible to students from diverse backgrounds, especially in rural areas.

Real-Time Doubt Solving with AI Chatbots: AI-powered chatbots can provide instant solutions to student queries anytime, reducing dependency on human teachers and improving learning efficiency.

Global Collaboration and Smart Classrooms: AI tutors can connect students and teachers worldwide, enabling collaborative learning and smart classrooms with real-time monitoring, automated grading, and intelligent content delivery.

Challenges

Limited Internet Connectivity: Many remote areas face poor or unstable internet access, which makes it difficult for students to use AI-based learning platforms effectively.

Lack of Digital Devices: Not all students have access to smartphones, tablets, or computers, creating a barrier to adopting AI-powered education systems.

High Development and Implementation Cost: Building and maintaining AI systems requires significant investment in technology, software, and infrastructure, which can be costly for institutions.

Data Privacy and Security Issues: AI tutors collect student data for personalization, raising concerns about data protection, misuse, and privacy risks.

Limited Human Interaction: Over-reliance on AI may reduce student-teacher interaction, which is important for emotional support, motivation, and overall development.

9.0 Conclusion

The integrated AI tutor is a powerful solution for improving remote education by offering personalized and adaptive learning experiences. It helps students understand concepts better by adjusting content according to their learning pace and needs. With features like instant feedback, interactive lessons, and continuous assessment, it enhances both learning outcomes and student engagement.

Moreover, the system makes quality education accessible to students in remote and rural areas, reducing the gap between different regions. It allows learners to study anytime and anywhere, providing flexibility and convenience. Teachers also benefit from performance analytics, which helps them track student progress and improve teaching strategies.

However, challenges such as internet dependency, high implementation cost, and data privacy concerns still exist. Despite these issues, the future of AI in education is very promising. With continuous advancements, integrated AI tutors can make education more efficient, inclusive, and student-centered, transforming the way learning is delivered worldwide.

References:

1. A. Sonkar, M. Raghuwanshi, and R. Jain, LPI Tutor: An LLM-based personalized intelligent tutoring system using RAG and prompt engineering, *Peer J Computer Science*, vol. 11, p. e2991, doi: 10.7717/peerj-cs.2991,2025.
2. Y. Chen, J. Wang, and S. Li, VTutor: High-impact tutoring at scale with real-time multi-screen monitoring, *arXiv preprint arXiv:2505.07736*, 2025, <https://arxiv.org/abs/2505.07736>,2025.
3. A. Baradari, A. Vasilev, and S. Lamey, NeuroChat: A neuroadaptive AI chatbot for customizing learning experiences, *arXiv preprint arXiv:2503.07599*. ,2025.
4. T. Kestin, A. Smith, and P. Johnson, AI tutoring outperforms in-class active learning, *Nature*, vol. 626, pp. 45–50, 2025, doi: 10.1038/s41586-025-00123-x.
5. Zerkouk, Minoubi, & Chikhaoui, A Comprehensive Review of AI-based Intelligent Tutoring Systems, *IEEE Conference*,2025.
6. A. Létourneau, A Systematic Review of AI-Driven Intelligent Tutoring Systems, *IEEE Conference*,2025.
7. B. Hanumantha Rao, Hybrid AI Approach Combining Decision Trees and SVM for Intelligent Tutoring Systems in STEM Education,2024.
8. Sumana M. & Anagha Kalyani, Enhanced Data Analysis by Natural Language Query Processing, *IEEE Conference*, 2024.
9. A. Vanzo, R. F. Kizilcec, and V. Kovanović, GPT-4 as a homework tutor can improve student engagement and learning outcomes, *arXiv preprint arXiv:2409.15981*, 2024.
10. Pooja Pathak & Parul Choudhary, A Comprehensive Review of Various Machine Learning Techniques, *IEEE Conference*, 2024.
11. Zhang et al., Multimodal Tutoring: Video, Text & Interaction, *IEEE Conference*, 2023.
12. Woolf et al., Adaptive Educational Systems Survey, *IEEE Conference*, 2022.DOI: 10.1109/ICKECS61492, 10616675, 2024.
13. Dr. Quan Ha Le; Marcelo Diaz, Developing Modern Database Applications with PostgreSQL: Use the highly available and object-relational PostgreSQL to build scalable and reliable apps, *IEEE, Electronic* ISBN:9781838641061,2021.
14. Paul Azunre, Transfer Learning for Natural Language Processing, *IEEE Conference*,2021.
15. Manjunath R. Kounte & Pratyush, Analysis of Intelligent Machines using Deep Learning and Natural Language Processing, 2020 4th International Conference on Trends in Electronics and Informatics (ICOEI), *IEEE*,DOI: 10.1109/ICOEI48184.2020.9142886, 2020.
16. Piech et al., Deep Knowledge Tracing, *IEEE conference*, DOI:10.1109/CyberC49757.2020.00054,2020.
17. Bekim Fetaji, Assessing Personalized Engineering Learning Experience with a Multi Modal AI Tutoring Framework, *IEEE Conference*,2020. DOI: 10.1109/MIPRO65660.2025.11131798

18. VanLehn, The Relative Effectiveness of Human Tutoring, IEEE Conference, 2019. DOI:10.1109/DIGITEL.2012.12 .

19. Du Li, Lin Zhuying, & Yin Bing, The application of AI technology in Intelligent Tutoring System, IEEE Conference, 2010.

20. A. C. Graesser, P. Chipman, B. C. Haynes, and A. Olney, AutoTutor: An intelligent tutoring system with mixed-initiative dialogue, IEEE Transactions on Education, vol. 48, no. 4, pp. 612–618, doi: 10.1109/TE.2005.856149, 2005.