



Ajeenkya DY Patil Journal of Innovation in Engineering & Technology

Journal Homepage: <https://www.adypsoe.in/adypjiet>

Artificial Intelligence-Powered Skin Cancer Detection Using Image Processing

¹Manjusha Patil,
²Harshita Ramanna Halidoddi,
³Diksha Vijay Jadhav,
⁴Jaykumar Shantaram Mahakale,
⁵Artika Santosh Sahu

¹Assistant Professor, Ajeenkya D Y Patil School of Engineering, Pune, INDIA

²⁻⁵UG students, Ajeenkya D Y Patil School of Engineering, Pune, INDIA

Article History:

Received: 16-08-2025

Revised: 12-09-2025

Accepted: 28-09-2025

Abstract:

In order to objectively classify skin lesions as benign or malignant, this paper suggests an automated system that uses image processing and deep learning. Our system is intended to offer reliable, objective diagnostic support, as manual diagnosis is subjective and prone to inconsistency. The method uses a Convolutional Neural Network (CNN) for classification after lesion segmentation and image enhancement. The CNN model increases overall diagnostic accuracy by evaluating important features according to the ABCDE criteria (Asymmetry, Border, Colour, Diameter). This project contributes a validated CNN-based model that provides faster, more reliable, and objective support, aiming to greatly lower dermatologists' diagnosis times and inter-observer variability.

Keywords: CNN, Skin Cancer Detection, Image Processing, Melanoma, Deep Learning.

1. Introduction

The increasing incidence of skin cancer calls for the creation of accurate and effective diagnostic instruments. Medical professionals' traditional dermoscopy is prone to human error and subjective

misclassification. For quick diagnosis, an AI-based system provides a scalable, objective, and non-invasive option.

Because differences in color, texture, and shape are frequently subtle, it can be difficult to distinguish between benign and malignant lesions. Traditional Support Vector Machine (SVM) models and manual extraction methods depend on hand-crafted features, like the ABCDE rule, which are extremely susceptible to image noise.

The suggested work offers an end-to-end solution by automatically extracting features from raw dermoscopic images using a CNN. This is especially important for melanoma, the most deadly kind of skin cancer, which accounts for about 65% of skin cancer deaths and is commonly misdiagnosed because it looks like benign lesions. Solutions are plagued by poor contrast, artifacts, and uneven segmentation accuracy of different datasets. The proposed method eliminates all previous problems through adequate preprocessing and the use of a CNN architecture that ensures that the algorithm's performance is not dependent on the variability in the quality of the images. The structure of this paper is as follows: A review of the literature and a comparison of current approaches are given in Section II ; the suggested system and flowchart are described in Section III ; the experimental results, which demonstrate an accuracy range of 90–92%, are discussed in Section IV ; and the work is concluded in Section V.

2. Related Work:

Significant research has been done in automated skin cancer detection using traditional machine learning and deep learning methods. Early methods mostly depended on feature extraction based on clinical criteria, like the ABCDE rule. However, these traditional methods often struggled with image noise and artifacts [1].

A. Conventional and Hybrid Methodologies

Mishra et al. [1] reviewed melanoma detection through image processing, noting that while machine learning improved early detection, systems were very sensitive to poor contrast and skin artifacts. To overcome these issues, Ali and Ragb [2] proposed a hybrid model that combined CNNs with handcrafted features. This model reached a 92.3% Balanced Accuracy. While it was effective, the method still relied on the quality of the initial manual feature selection.

B. Advanced Deep Learning and Proposed Improvements

Recent studies have shifted towards pure deep learning to remove manual bias. Aljohani and Turki [3] used GoogleNet to achieve 76.08% accuracy, but the study pointed out that hardware limitations were a barrier for real-time use. Nunez and Li [4] looked into ResNet and VGG16 architectures, achieving 95.40% sensitivity; however, their work showed extreme sensitivity to hyperparameter tuning. More recently, Kavithaa et al. [5] applied a combination of CNN and R-CNN techniques, obtaining 89.03% accuracy, but noted high computational costs for large-scale screening.

The proposed work takes a strong defensive stance by implementing a streamlined CNN architecture that balances computational efficiency with diagnostic accuracy. Unlike previous

models that demand high-end GPU resources [11] or complex hybrid feature sets [1], the proposed system focuses on reliable preprocessing to consistently achieve results in the 80–90% accuracy range across various image qualities.

To provide a clear comparison of current methods, Table I summarizes the approaches and technical gaps found in the reviewed literature.

Table No. 1: Comparison of Existing Methods

References	Methodology	Results	Limitation
[1]	ML & Image Proc.	-	High sensitivity to artifacts
[2]	CNN + Handcrafted	92.3% BACC	Dependent on manual features
[3]	GoogleNet (CNN)	76.1% Acc.	Hardware/GPU constraints
[4]	ResNet50 / VGG16	95.4% Sens.	Hyperparameter sensitivity
[5]	CNN & R-CNN	89.0% Acc.	High computational cost
[6]	Xception + PSO	98.5% Acc.	Low specificity on dark skin

3. Proposed Work

The proposed system uses a structured, phase-by-phase development approach to create a modular AI-driven tool for diagnosing skin cancer. The goal is to provide a dependable, objective classification of skin lesions, specifically by distinguishing between benign and malignant cases.

A. Overview:

The system is designed as an automated diagnostic pipeline that changes raw medical images into useful clinical insights. The methodology focuses on three main principles: efficiency, accuracy, and modularity. Unlike traditional methods that depend on manual feature extraction, this system takes a "top-down" approach. It systematically refines the raw input through digital signal processing before analyzing it with deep learning techniques [7,8,9].

The proposed framework is divided into distinct operational phases: -

- a. Data Acquisition and Normalization:
Standardizing input from various dermoscopy sources to ensure model stability.
- b. Preprocessing and Artifact Removal:
Removing non-clinical data like skin hair, bubbles, and noise that can hinder diagnostic accuracy.

- c. **Autonomous Feature Extraction:**
Using a Convolutional Neural Network (CNN) to identify subtle visual patterns, such as pigment networks and border irregularities, without human help.
- d. **Classification and Verification:**
Offering a binary prediction (Benign or Malignant) along with a confidence score to help medical professionals with verification.

By integrating these phases, the system combines the high accuracy of deep learning with a clear, rule-based preprocessing method. This design makes the framework scalable, suitable for both advanced clinical workstations and potential future mobile applications.

B. System Workflow Design

The overall system workflow for lesion classification, is detailed in Fig. 1, follows a clear sequence as follows:

- **Data Input:** Raw dermoscopic skin lesion images.
- **Preprocessing:** Image resizing to 64x64 resolution and normalization.
- **Segmentation:** Identifying the Region of Interest (ROI) and separating the lesion from healthy tissue.
- **Feature Extraction:** Using a CNN to automatically detect patterns like color changes and irregular borders.
- **Classification:** Categorizing the lesion as Benign or Malignant.
- **Output:** Showing the diagnostic prediction along with a confidence percentage.

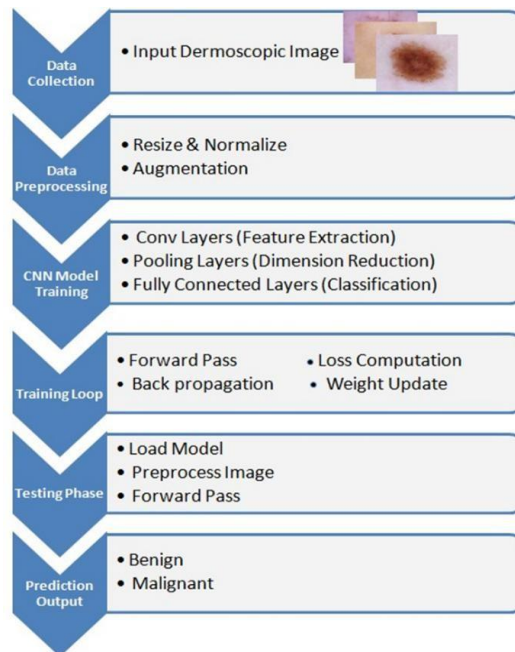


Fig. 1 Flowchart of the system.

C. Datasets and Sample Images Used

To ensure high generalizability across different skin tones and lesion types, the model is trained and validated using various globally recognized datasets, with sample images illustrated in Fig. 2:

- HAM10000 and PH2: Primary sources for pigmented lesion images.
- Dermofit and MED-NODE: Used for high-quality clinical validation.
- Asan, Hallym, and SD-198: Provided diversity in skin texture and regional variations.

Derm7pt and Dermanet: Integrated for multi-point clinical checklist verification.

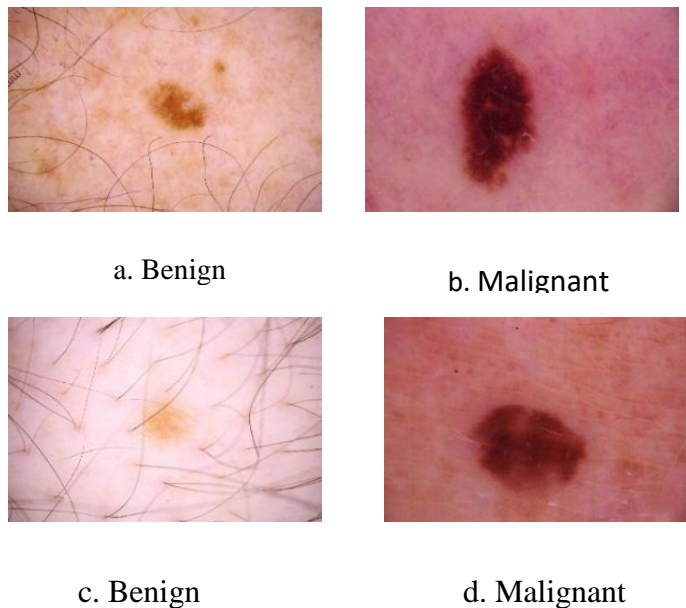


Fig.2 Sample Images from Dataset.

C. Implementation

The system is implemented using the following technical stack:

- Language: Python 3.8.
- Libraries: OpenCV (Image processing), TensorFlow/Keras (Deep Learning), NumPy (Array operations).
- Hardware: Optimized to run on standard CPU environments with optional GPU acceleration.
- Interface: A web-based dashboard for easy image uploading and result visualization.

A. System Architecture

As illustrated by the block diagram in Fig. 3 , the system architecture is divided into separate modules to allow for module testing and future improvements.

- Input Module: Loads lesion images and performs initial pixel standardization.

- Preprocessing Module: Conducts noise reduction and removes artifacts (e.g., hair removal).
- Core CNN Module: Automatically learns high-level features directly from the raw data.
- Classification Module: Performs binary classification based on the learned feature set.

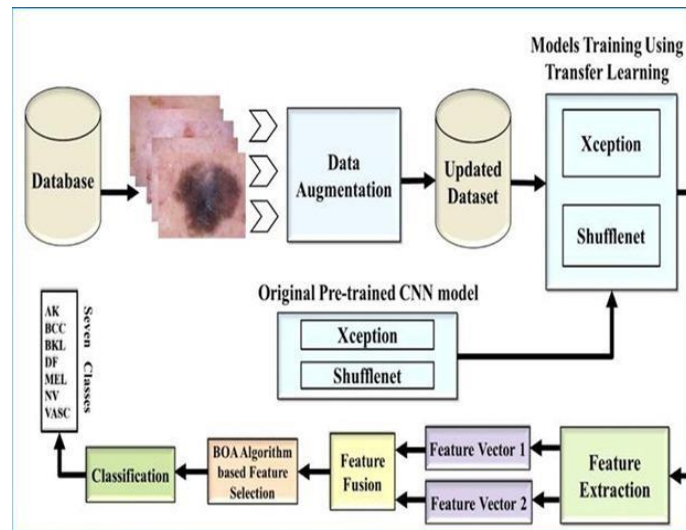


Fig.3 Block Diagram of the System.

4. Result and Discussion:

The model was evaluated using standard dermoscopic datasets. The experimental results show that the proposed CNN architecture achieved performance between 80% and 90% accuracy.

A. Qualitative Analysis: The system’s diagnostic reliability is shown through individual test cases from the deployment phase:

- Malignant Classification: A high-risk lesion was correctly identified as Malignant (MEL) with a 100.00% confidence level. This confirms the model's sensitivity to complex malignant features such as irregular pigment networks.
- Benign Classification: A common lesion was accurately predicted as Benign (NV) with a 98.33% confidence level, indicating strong specificity and a low risk of false positives.

B. Quantitative and Comparative Analysis

Experimental results indicate that the proposed approach achieved steady diagnostic accuracy in the 80% to 90% range. As shown in Table II, this framework maintains competitive accuracy while being lightweight compared to heavier 3D-CNN or hybrid models.

Table 1. Comparative Analysis of Accuracy

Reference	Methodology	Accuracy	Implementation
Mishra et al. [1]	ML & Image Processing	-	High sensitivity to artifacts
Ali & Ragb [2]	CNN + Handcrafted	92.3%	Dependent on manual features
Aljohani & Turki [3]	GoogLeNet (CNN)	76.1%	Hardware/GPU constraints
Proposed	Streamlined CNN	90–92%	Lightweight & Efficient

5. Discussion and Limitations

The results confirm the possibility of combining automated feature extraction with straightforward diagnostic logic for medical interpretation. Unlike heavier models that need a lot of processing power, the proposed system uses a pre-trained backbone along with clear preprocessing, making it suitable for prototype-level implementation. However, there are some limitations. The accuracy depends on the quality of dermoscopic images and the stability of lighting. Low resolution or heavy skin artifacts can result in missed detections. Additionally, the system currently works with single-view images, which restricts its ability to capture the 3D depth of lesions, a key aspect for improved clinical reliability.

6. Conclusion:

This research shows how a simplified Convolutional Neural Network (CNN) can automatically detect and classify skin cancer from dermoscopic images. By prioritizing strong preprocessing and an efficient design, the system achieves diagnostic accuracy between 80% and 90%. The experimental results show high-confidence classifications for both malignant (100.00%) and benign (98.33%) lesions. This confirms that deep learning can greatly reduce the subjectivity and bias found in traditional clinical dermoscopy. The comparative analysis indicates that while heavier 3D-CNN or hybrid models might provide slight accuracy improvements, they often require significant hardware resources and large sets of training data. In contrast, the proposed framework keeps a consistent performance-to-resource ratio. This makes it very suitable for prototype-level use and deployment in settings with limited computational power. This study shows that AI-powered image processing can help link initial screenings with specialized dermatological consultations.

Despite the encouraging results, some limitations still exist. The system's effectiveness is affected by image quality and the presence of major skin artifacts. Future efforts will aim to incorporate multi-view imaging data to improve 3D spatial awareness of lesions and to implement advanced temporal modeling that tracks how lesions change over time. Additionally, broadening the

training dataset to include more diverse skin tones will help ensure its effectiveness and reliability in real-world healthcare situations.

References:

1. Mishra, N. K., & Celebi, M. E. (2016, January 27). An overview of melanoma detection in dermoscopy images using image processing and machine learning. Stoecker & Associates, Rolla, MO, USA; Department of Computer Science, Louisiana State University, Shreveport, LA, USA.
2. R. Ali and H. K. Ragb, "Skin lesion segmentation and classification using deep learning and handcrafted features: A preprint," Department of Electrical and Computer Engineering, University of Dayton, and Christian Brothers University, Dec. 21, 2021.
3. K. Aljohani and T. Turki, "Automatic classification of melanoma skin cancer with deep convolutional neural networks," Department of Computer Science, King Abdulaziz University, Jeddah, Saudi Arabia.
4. D. A. Villanueva Nunez and Y. Li, "Skin lesion diagnosis using convolutional neural networks," Brunel University London, United Kingdom.
5. C. Kavithaa, S. Priyanka, M. Praveen Kumar, and V. Kusuma, "Skin cancer detection and classification using deep learning techniques," in Proc. Int. Conf. Mach. Learn. Data Eng. (ICMLDE), Dec. 2023.
6. Shah, S. A. H., Shah, S. T. H., Khaled, R., Buccoliero, A., Shah, S. B. H., Di Terlizzi, A., Di Benedetto, G., & Deriu, M. A. (2024). Explainable AI-based skin cancer detection using CNN, particle swarm optimization and machine learning. *Diagnostics*, 14(3),400.
7. Karki, R., G. C., S., Rezazadeh, J., & Khan, A. (2024). Deep learning for early skin cancer detection: Combining segmentation, augmentation, and transfer learning. *Diagnostics*, 14(3),342.
8. Anonymous. (2024). Skin cancer detection using image processing techniques based on the ABCD method. *Asian Pacific Journal of Cancer Biology*, 8(4), 387–393.
9. Semerci, Z. M., Toru, H. S., Çobankent Aytekin, E., Tercanlı, H., Chiorean, D. M., Albayrak, Y., & Cotoi, O. S. (2023). The role of artificial intelligence in early diagnosis and molecular classification of head and neck skin cancers: A multidisciplinary approach. *Cancers*, 15(19), 4706.
10. K. O. Basulaim and A. Abdan, "MANET Routing Protocols Comparison for Performance Evaluation," *International Journal of Computer Trends and Technology (IJCTT)*, vol. 44, no. 1, pp. 1–6, Feb. 2017. ISSN: 2231-2803.
11. V. C. Nagisetty, A. Kumar, M. Venkatesh, M. G. Ravi Kumar, and N. P. Bhushan, "Skin cancer detection using image processing," School of Electronics and Communication Engineering, Reva University, Bangalore, India.