



“Empowerment through quality technical education”

Dr. D. Y. PATIL SCHOOL OF ENGINEERING

(Approved By AICTE, New Delhi Recognized by Govt. of Maharashtra, Affiliated to Savitribai Phule Pune University).

AISHE Code: C-46648 DTE Code: EN6732 SPPU PUN Code: CEGPO15720

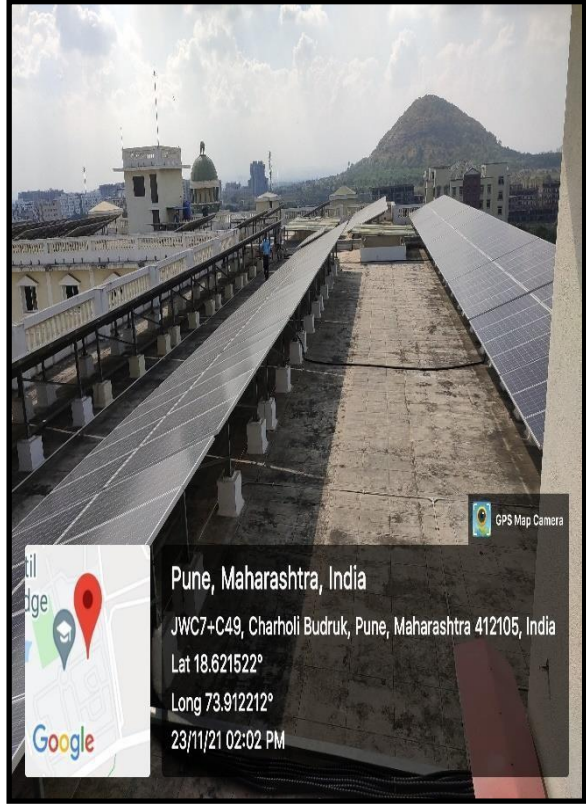
(Accredited by NAAC)

7.1.2 The Institution has facilities for alternate sources of Energy and Energy Conservation Measures

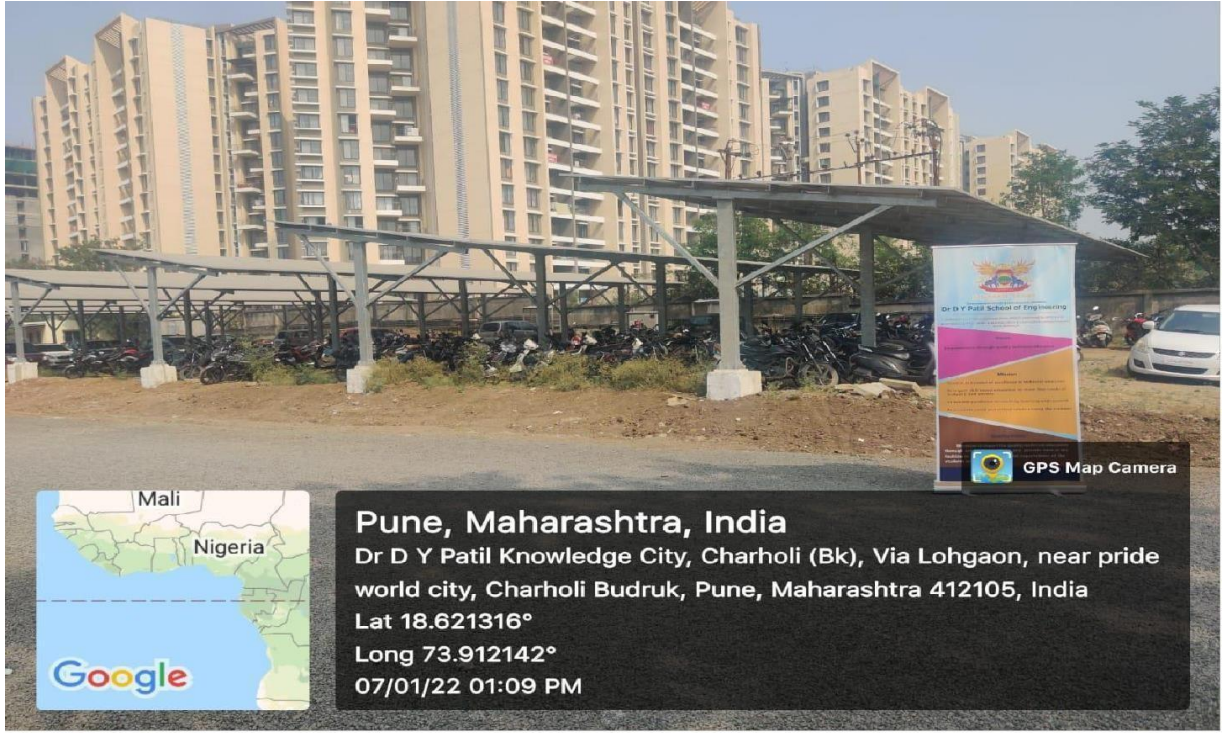
1. Solar Energy: -



Main Building Roof Solar Panel capable of 830 to 860 KVA

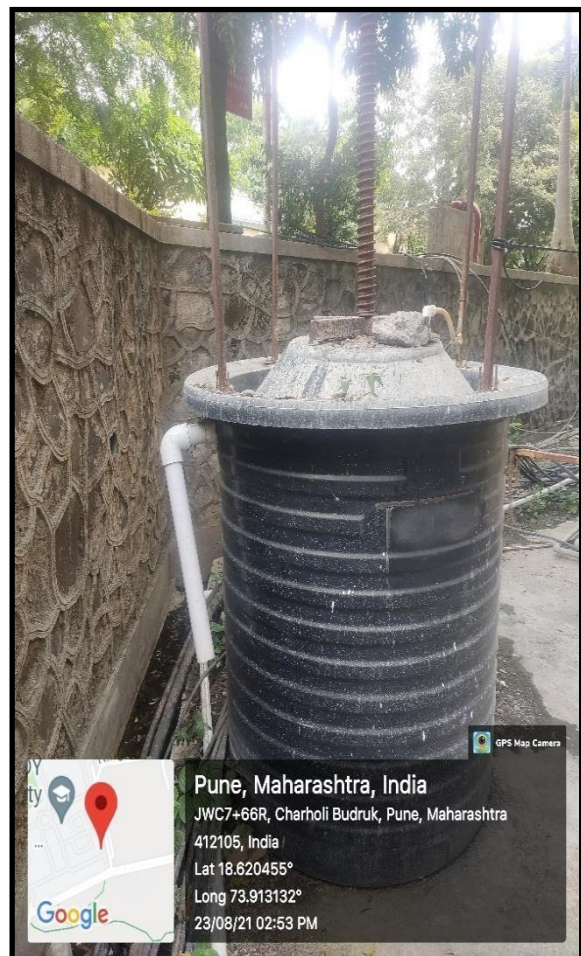


Roof of Engineering Schools and Hostels



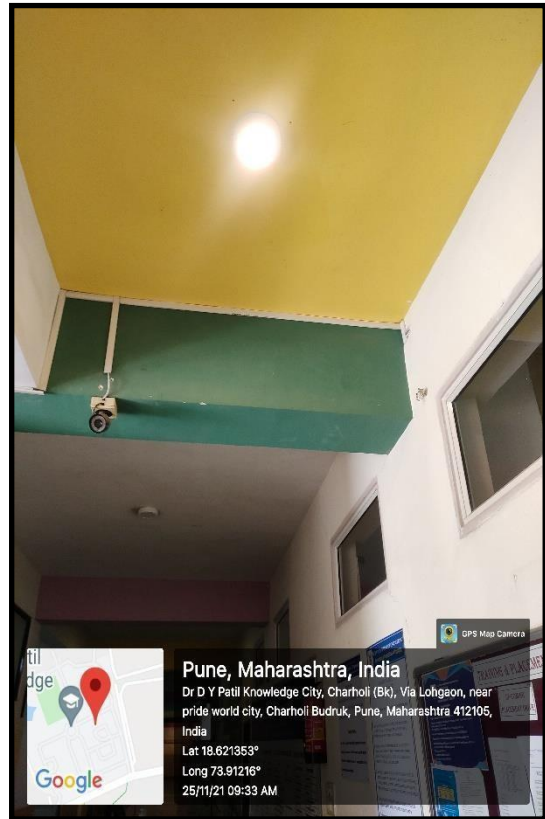
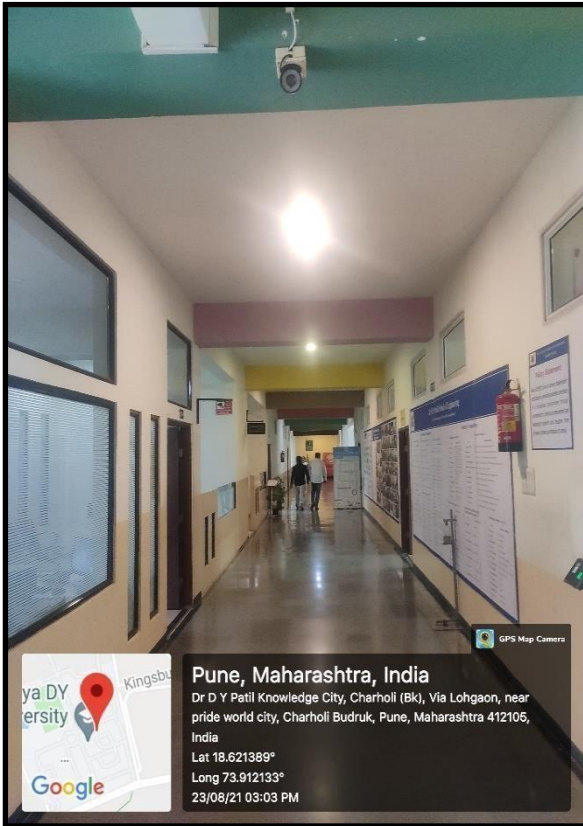
Vehicle Parking Area

2. Biogas Plant: -



Biogas Plant Located at Behind Canteen Area

3. Use of LED Bulbs/ Power Efficient Equipment: -



Building Common Area



Conference Room

4. Sensor based energy conversion:-



LED Toilet Light Sensor