



Dr D Y Patil School of Engineering
Dr D Y Patil Knowledge City,
Charholi (Bk), Lohegaon, Pune – 412 105

Internal Quality Assurance Cell
(IQAC)

Process Manual for
Slow & Advanced Learners
(Identification & Activities)

Version	1.0
Issue Date	12/07/2020 Form No. (IQAC/37)



✦ Introduction:

Within the classrooms faculty have to deal with different types of learners; few learners are very intelligent who learn very fast and few are quite weak who learn very slowly. Therefore, it is required to determine the abilities of the learners in the class. Based on the ability determined, some learners need only guidance and some learners need a hard work and regular attention.

On the basis of their preceding exam performance, current subject performance and basic knowledge, learning speed of learners can be classified into groups; **advanced learners** and **slow learners**. Each type of learners has different learning attitudes and learning habits. A faculty has to adapt a teaching methodology such that he/she may not lose the attention of the slow learners and turn off the advanced learners.

The purpose of assessment of the learning levels of the learners and conduction of activities for them is

- To identify slow and advanced learners in the class as per the mechanism.
- To motivate slow and advanced learners for self-empowerment and teamwork.
- To help slow learners for improvement in participative learning and activities so that they can become advanced learners.

The remainder of this manual describes the constituent parts of the slow learner and advanced learner identification process and activities for them and includes guidance on process.

✦ Process Input:

To identify slow and advanced learner following inputs is needed

- Marks obtained in previous year or semester in percentage
- Unit Test-1** on the respective subject after completion of 1st unit.

✦ Process of Slow learners and Advanced Learners (Identification and Activities):

The process of assessment of the learning levels of the learners and conduction of activities for them shall be carried out through a systematic procedure as shown in the

flow chart of Fig. 1 and explained in detail as below:

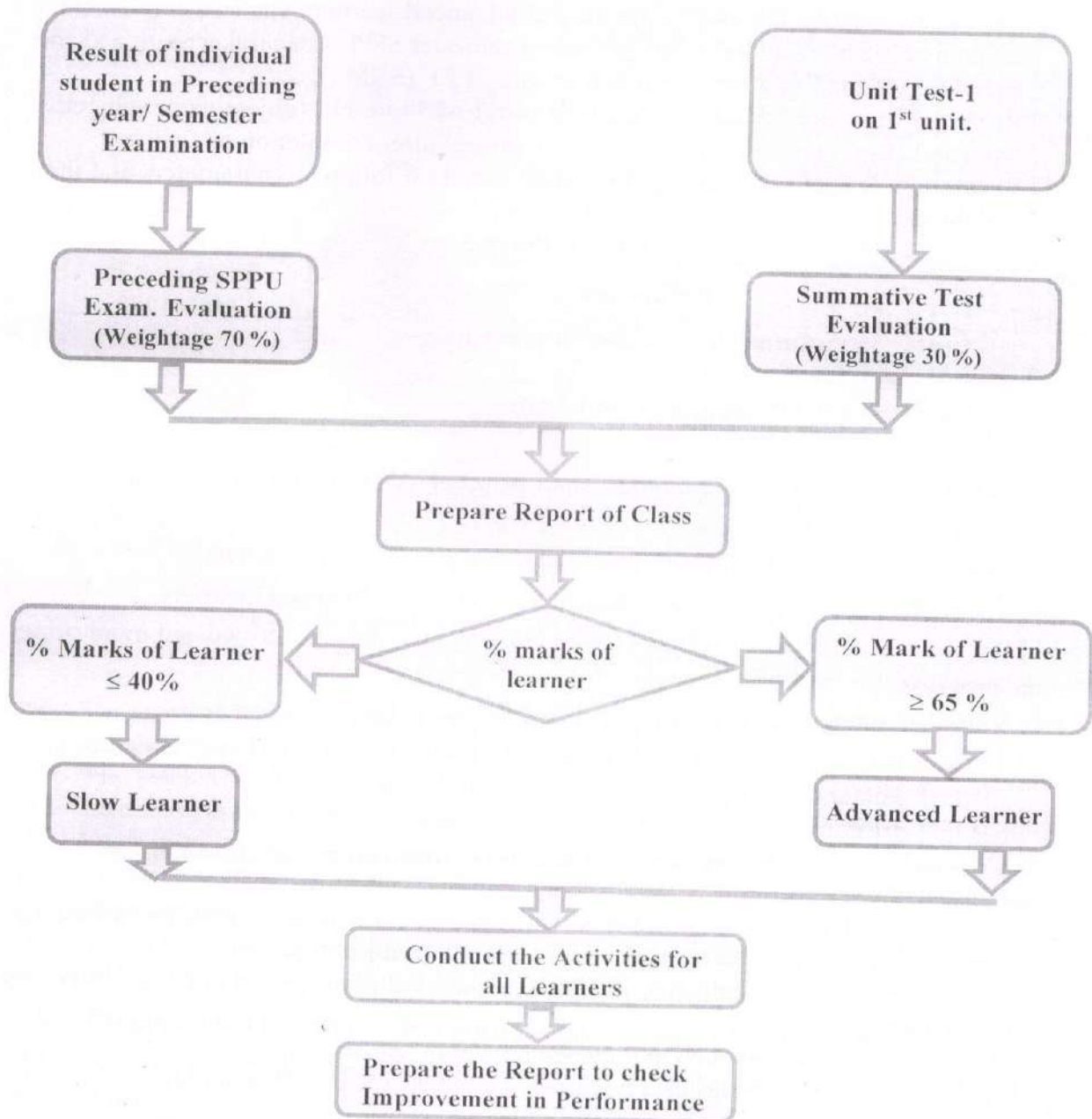


Fig. 1 Process Flow Chart for identifying the slow and advanced learner

1. Assessment of the learning levels of the learners:

- Slow and advanced learners shall be identified for **each subject** separately by respective subject teacher **in every semester**.
- Process to identify the slow learners and advanced learners shall be implemented immediately after declaration of preceding semester SPPU examination result and after completion of unit 1 or after one month in case of FE (SEM I).
- Every subject teacher shall conduct **unit test-1 of 30 marks** (objective or subjective type) and duration of 30 minutes for their subject after completion of first unit.
- Slow and advanced learners are identified based on following parameters and their weightage.

Table 1: Parameters

Sr. No.	Parameter	Weightage in Percentage
1	Academic performance of learners in preceding University examination	70%
2	Marks obtained by student in Unit Test-1	30%

- Based on above parameter a report shall be prepared for complete class showing % score of each student.
- The student securing marks $\leq 40\%$ shall be treated as Slow Learners.
- The student securing marks $\geq 65\%$ shall be treated as Advanced Learners.
- Prepare separate lists of learners for conducting activities as defined and monitoring the progress.
- You can name these groups of learners as Achiever (slow learner), Winner (Advanced learners) etc. or any other names to avoid vertical division among the class.

2. Conduction of activities for Slow learners (implement minimum three activities):

- The teacher shall conduct problem solving sessions /revision sessions/extrasessions.
- Personal attention shall be provided by respective subject teacher.
- The subject teacher shall give assignments and help learners in solving University question papers.
- The subject teacher shall supply question bank to learner.
- Any other activity to be decided by respective subject teacher (if required).

3. Conduction of activities for Advanced learners (minimum three activities):

- Assignments or tasks with greater difficulty level shall be given.
- Learners shall be encouraged to complete NPTEL/Coursera/Udemy/Advanced courses.



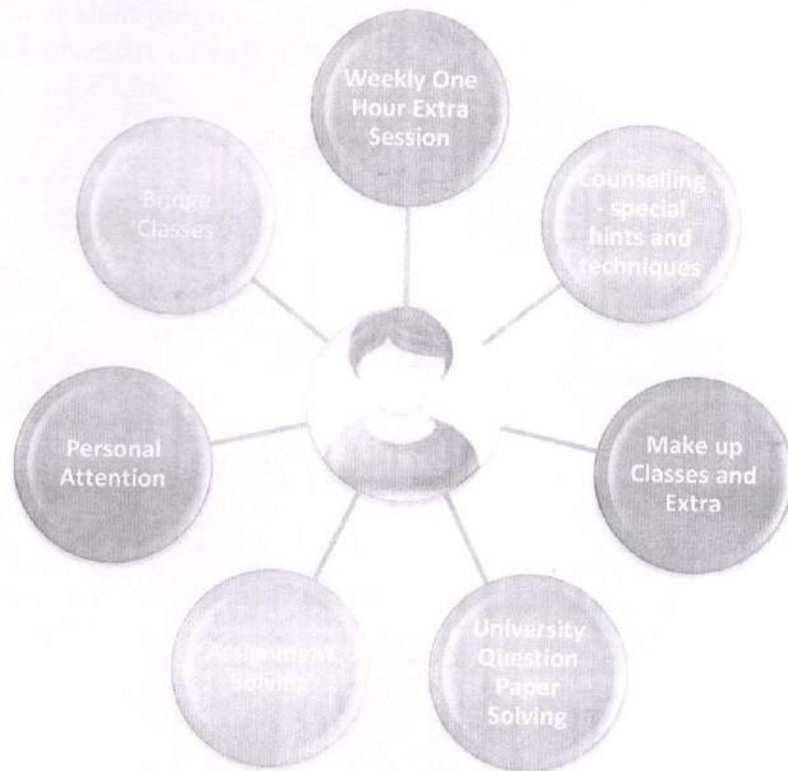


Fig. 2 Proposed activates for Slow Learner

- Learners shall be encouraged for participation in Seminars/Conferences/Technical Events.
- The teacher shall give assignments based on prototype/model making.
- Learners shall be encouraged for industrial visits and industry sponsored internships.
- Learners shall be motivated and guided for higher studies and various competitive examinations.
- Any other activity to be decided by respective subject teacher (if required).

4. Preparation of Performance improvement report of slow learner

- Each faculty shall prepare report after declaration of University result of current semester.
- Checkout the performance of the slow & transitional learners in examination. If the performance is improved then it closes the loop of the activity.

✦ Roles and Responsibilities of Subject Teacher:

The subject teacher is responsible for implementing the complete process as per the manual.

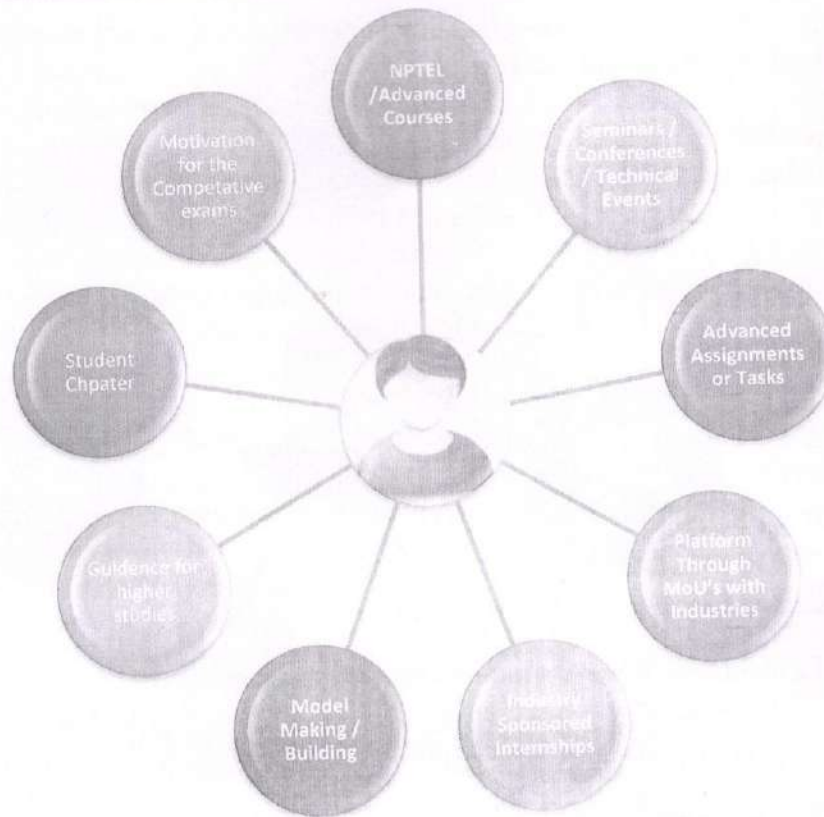


Fig. 3 Activities Conducted for Transitional & Advanced Learner

Subject Teachers will be responsible for:

- ❖ Conducting **Unit test-1 on first unit of 30 marks** and duration of 30 minutes.
- ❖ Evaluation of test answer sheets and preparing the class test result report of class.
- ❖ Preparing and maintaining reports of the class based on parameters decided for assessment of the learning levels of the learners.
- ❖ Preparing separate list of slow and advanced learners, conduct the activities accordingly and maintaining the records.
- ❖ Preparing the report after university result declaration of current semester.

✦ **Documents to be maintained**

- ❖ Cover page: Slow & Advanced Learner Activity
- ❖ Report of result of test/s conducted.
- ❖ List of slow learners
- ❖ List of Advanced learners
- ❖ Schedule of activities to be conducted.
- ❖ Attendance record for session conducted for slow learners
- ❖ Report of performance improvement for slow learners & transitional learners.
- ❖ List / Record of tasks given to advanced learners

✦ **Expected Outcome**

- Timely conduction of activities

- Records based on student progress and observation.
- Improvement in University examination.

